

Central Indiana Orchid Society

The CIOS Newsletter

Volume 3, Issue 3

March 13, 2009

Inside this issue:

Upcoming Events	2
Spring Orchid Show	2
Show Refreshments	3
Meeting Refreshments	3
Orchid Conservation	4

Upcoming Meetings:

- *April 19-Post Show Wrap-Up*
- *May 31-Ken Mettler- "Native Orchids"*
- *June 28*
- *July 26*
- *August 23*
- *September 26-Chicagoland Bus Trip*
- *October 25*
- *November 15-Annual Meeting*
- *December 6-Christmas Party and Bingo*

Virtual Tour of Growing Setups

Mike Hinshaw has been traveling near and far over central Indiana, visiting our membership and taking notes and pictures. As we know, everyone has little tricks and trades they use with the environment that their own home provides to get the best looking orchids possible. He has finally gathered all the data and is bringing us the information that he's compiled.

Mike has created a virtual tour of the growing setups that he's visited. He also would like to add a special emphasis in his presentation on those who've grown under lights. Apparently, Mike has been quite impressed with a number of lighting setups. . .so much so that he's built himself a light setup for

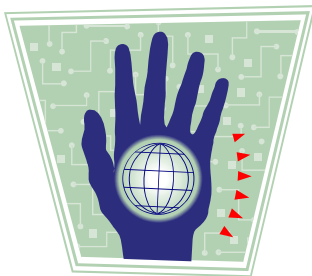
himself! This presentation will provide useful information for those just beginning orchid growing and also those experience growers, who might want to try something new.

So please join us at our next meeting March 22, 1:30 pm in the meeting room behind Garfield Park Conservatory.

Directions to Garfield Park:

Take I-65 to the Raymond St. exit, turn west toward Shelby St. Turn left (South) onto Shelby St. and go approx. 3 blocks. The entrance to Garfield Park will be on the right side (West) of Shelby St. The Conservatory is located just inside the park on the left.





Upcoming Events

March 21-22, 2009

Illinois Orchid Society
Spring Show

Chicago Botanic Gardens,
Glencoe, IL

March 27-29, 2009

Mid America Orchid Congress & Central Ohio Orchid Society

Marriott Hotel, Columbus, OH

April 17-19, 2009

Central Indiana Orchid Society

Set-up-April 17

September 25-27, 2009

Chicagoland Orchid Fest
Chicago, IL

October 16-18, 2009

Kentucky Orchid Society
Louisville, KY

October 30-November 1, 2009

Mid America Orchid Congress & Nashville Orchid Society

Marriott Cool Springs Hotel, Franklin, TN

Spring Orchid Show

I've seen the first bulbs come up so I'm starting to get "that feeling": its time to get ready for our Spring Orchid Show on 18th and 19th April.

Found enclosed with this newsletter is the poster promoting the show. Please feel free to distribute it where you think it will do the most good. Think about maybe your local libraries, grocery stores, greenhouses, nursing homes. If you'd like to have more copies (and your getting the snail mail version of this newsletter), let Larry Hill know and he could get you some more.

As with every show, we need your help to make it a success. We can use some help on Friday morning to get the display areas set up, so you could arrive any time after 9:00 am. Any amount of time you can be there will be a big help. Also we need to put in our own society's display so please remember to bring any plants you have in bloom (and maybe some foliage plants for accents). If you can't make it to set-up, collaborate with someone to help transport your lovelies there. . .ask around at the meeting.

We'll need clerks to arrive Saturday

morning the 18th by 8:00 am. During show hours, some folks will be needed to man our info table and plant sale table. At the meeting this month, we will get these slots filled by sending around a sign up sheet. Please take a look at your calendars before hand and come prepared to choose a time. For questions or if you'd like to help but can't make the meeting, please let Larry Hill know (TSLDH@lightbound.com).

The actual flower is the plant's highest fulfillment, and are not here exclusively for herbaria, county floras and plant geography: they are here first of all for delight.

- John Ruskin

Orchid Show Refreshments

We're still in need of some additional food donations so volunteers and judges can eat well during our big show in April.

Below is the list of suggested items still needed:

For Friday night:

Green Bean or Corn Casserole
 Potato Casserole or Salad
 Crock-pot mashed potatoes
 Sweet potatoes
 Tuna and noodle crock-pot
 1-2 veggie platters or lettuce salad
 1-2 fruit platters
 Cookies or brownies
 1 gallon lemonade, sweet tea, & unsweetened tea, pop, ice

For Saturday morning:

Fruit (bananas, oranges, apples, grapes)
 Donuts or Danish
 Bagels with cream cheese

For Saturday Lunch:

Any casserole or crock-pot dish
 Potatoes or corn
 Fruit tray
 Pasta
 Carrots
 Brownies &/or cookies
 1 gallon lemonade, sweet tea, & unsweetened tea
 Pop, ice, bottled water

For Sunday:

Cheese
 Crackers
 Assorted beverages
 Fruit tray
 Pickles
 Chips

If you'd like to bring food in on Friday

but it's not needed till Saturday, we can fit it in to the fridge overnight. Otherwise, have Saturdays food to Garfield by 7-8 am.

Big thanks to everyone who's signed up to bring something already! It's greatly appreciated! Thank you goes to:

GINNY HILL, LINDA ALLEN, SARAH EVANS, LOWELL FLINT, DONNA CASE, PEGGY HINSHAW, IONE BOODT, NANCY FANSLER & KWEN HSU.

Please take a moment to look at the list and see what you can bring. Then let Ginny Hill know what you're bringing (so we don't have duplicates) at TSLDH@lightbound.com or (317) 279-5896. Thanks for your help!

I didn't know what narcissism was until I beheld my own naricssus.

- Charles Kuralt

Refreshments (for our meetings)

March-Ginny Hill, **Open**

Kwen Hsu

April-Ginny Hill, refreshment chair of show

July-Pitch-In Picnic

May-Nancy Fansler, Karen Neimann, Anne Mayles

August-**Open**

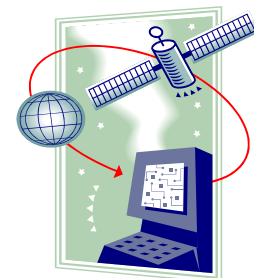
September-Chicagoland bus trip-BYOsnacks

June-Doug & Linda Allen,

October-**Open**

November-**Open**

December-Holiday Bingo and Pitch-In



Central Indiana Orchid Society

Lysiane Huber, newsletter
editor

Danville, IN 46122
(317) 965-7582
anamotita@hotmail.com

**Next Newsletter Deadline:
April 10, 2009**

We're on the Web
www.centralIOS.org

Orchid Conservation – Photographing Wild Orchids

Written by Susan Taylor of BellaOnline

Reprinted with permission from Susan Taylor, BellaOnline Orchid Editor, courtesy of the Orchid Conservation Coalition (<http://www.orchidconservationcoalition.org>).

I recently read a post on an orchid forum which took me by surprise and really hit a chord for me. We have all read about the loss of forest habitat around the world and the resulting loss of thousands of orchid species. We are encouraged to buy pieces of rainforest in order to preserve the natural habitat of the plants we love. But there is an even more insidious kind of destruction going on that I had not even considered: the habitat destruction caused by those of us who love our wild orchids to death.

The post I refer to was done by Leo Schordje of Illinois who has been a member of the orchid world for years. North America is the home of more than 150 native wild orchids, some of which are showy enough to be interesting to photographers and orchid enthusiasts. We organize tours to go find them during their blooming season; and spend a great deal of time setting up just that perfect shot for our collections. What we do when we are engaged in our hob-

bies is just as bad for the orchids as the habitat destruction in tropical areas ... we are killing the plants we love. According to Leo, many native temperate orchids grow in sandy prairie soils that are soft and loose. As people crowd around to view flowers the soil is compacted to the point that the plants often can no longer grow and any surrounding seedlings, or non-blooming plants are trampled. Other types of terrestrial orchids grow in bogs or wet areas which are quickly destroyed by foot traffic of any kind. We're killing not only the mature plants, but often the next generations too. He cites one example in the Chiwaukee Prairie Preserve with trails circling individual beautiful specimens and trampled areas up to fifteen feet in circumference around the plants. Nothing grows in the compacted areas for a number of years until rain, earthworms and freeze/thaw cycles eventually return the soil to its natural state. He has even documented a specific specimen of *Platanthera psychodes* (<http://orchidspecies.com/platpsychodes.htm>), The Purple Fringed Orchid, in Illinois Beach State Park which was trampled and killed twelve years ago and has never reappeared at the site.

As the spring season comes upon us, please think about this as you explore and look for plants. Stay well away, use only established trails and a long-range lens to get your pictures. Tell your photography societies of the dangers of killing the plants they're trying to capture for posterity. A living plant will be much more important to the ecology of the region than a spectacular closeup!
